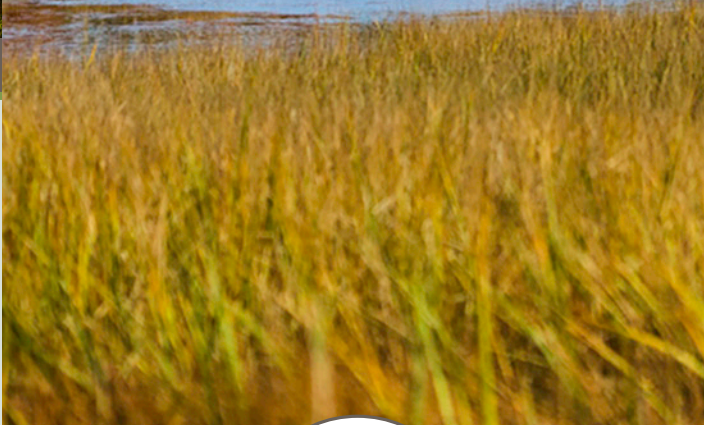




photos: Jim Newton

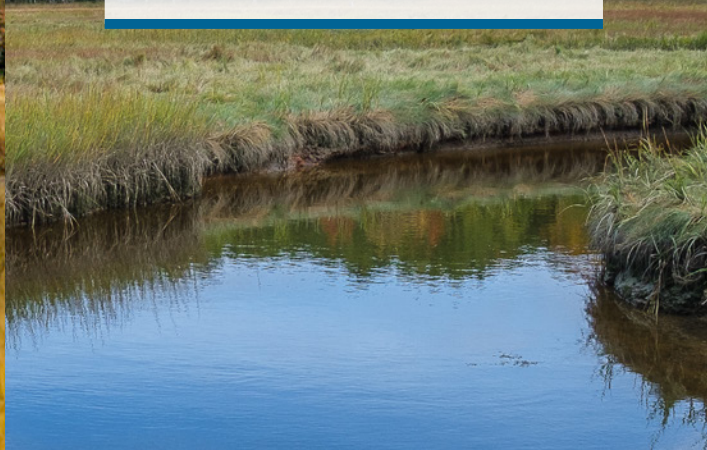
Boothbay Region Land Trust is a nonprofit land conservation organization which seeks to conserve, for the public benefit, the natural habitat, scenic beauty, and working land of the Boothbay Region.



ZAK PRESERVE



Boothbay Region Land Trust



GUIDELINES

Thank you for adhering to the following preserve use guidelines:

- Dogs must be leashed at all times.
- Pack out all trash including dog waste.
- No overnight camping or fires.
- Do not trespass on neighboring private property.

MEMBERSHIP

Our land conservation and public access rely on the financial support of our members. If you enjoy our nature preserves, please consider becoming a member by making a donation today.



To join us, scan this QR code or visit us at **BBRLT.org**



60 Samoset Road / PO Box 183
Boothbay Harbor, ME 04538

207-633-4818 / brrlt@brrlt.org
BBRLT.org



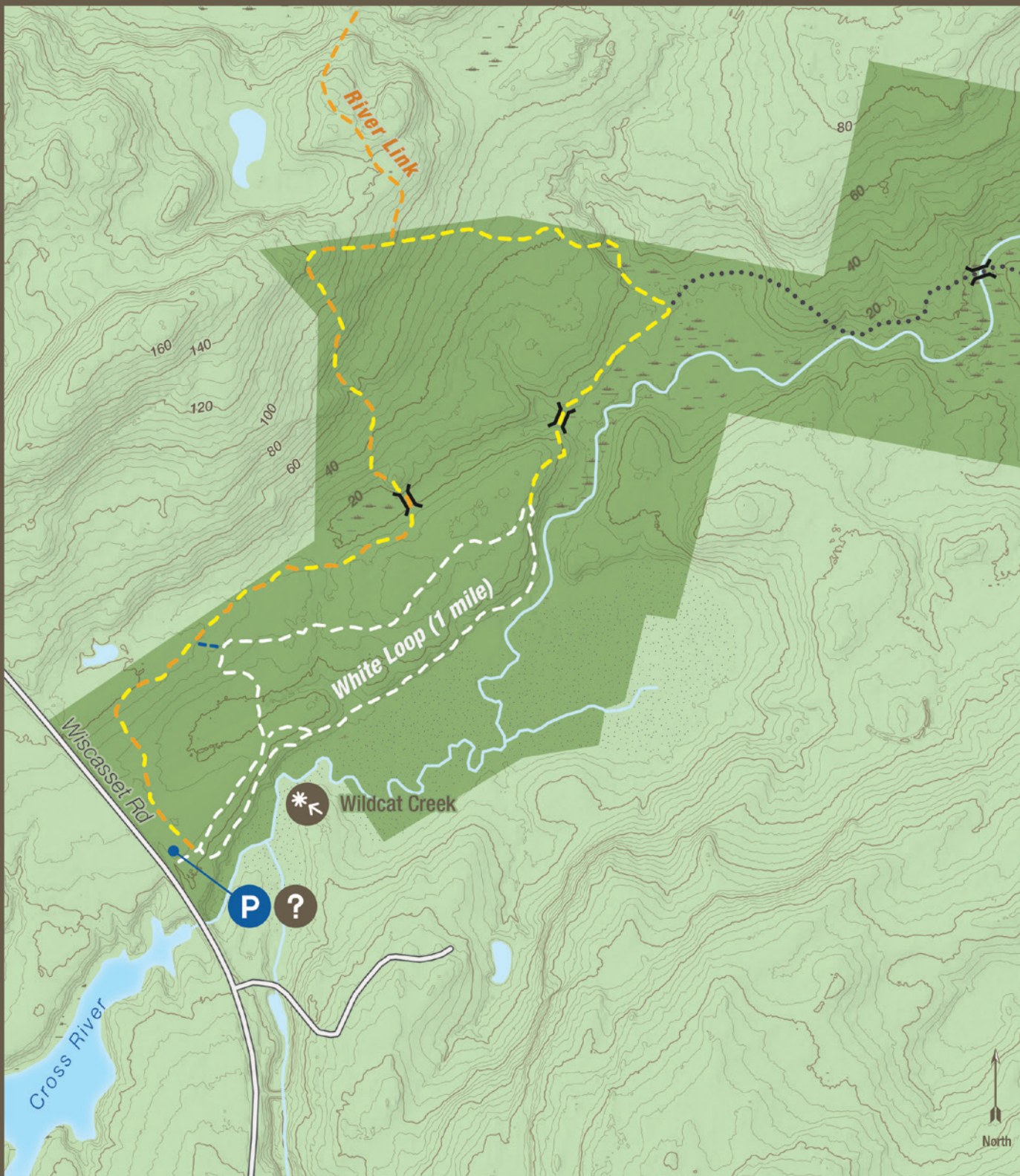
The accreditation seal is awarded to land trusts meeting the highest national standards for excellence and conservation permanence.

Trail Guide

ZAK PRESERVE

Wiscasset Rd (Rt 27)
Boothbay, Maine

Zak Preserve is centrally located at the border of Boothbay and Edgecomb and serves as an important wildlife corridor between the Sheepscot and Damariscotta Rivers. Straddling Wildcat Creek, Zak encompasses large open fields, a deer-yard, a salt marsh, freshwater wetlands, and extensive woods. Zak's 2.5 miles of trails provide easy hiking, and are particularly suited to snowshoeing and cross-country skiing in the winter months. Zak is also the southern terminus of the River~Link Trail, a collaborative wildlife corridor and trail system that connects Zak Preserve in Boothbay to Dodge Point Public Lands in Newcastle, crossing a number of conservation properties across more than 7 miles of trail. Due to the sensitive habitat at Zak Preserve, dogs are required to be leashed at all times.



	Parking		Contours
	Point of Interest		Fresh/Salt Marsh
	Information		Property Bounds
	Dogs on Leash		Primary Loop
	Information		River Link Trail
	Information		Unmanaged Trail
	Information		Cross Cuts & Other Trails
	Bridge		



SOURCES:
Maine Orthoimagery Library, 2018 imagery; the National Elevation Dataset; the National Hydrography Dataset; the Maine GIS Data Library (NG 911 Roads, Parcel Data, Conserved Lands Database); Boothbay Region Land Trust (trail data, points of interest); all data projected in UTM 19 North, NAD 83.
Made by Rhumb Line Maps, 2022.